



*Total Solution Provider in Saw Device*

---

# SL07506AV

75.0MHz IF SAW Filter

6.31MHz Bandwidth

Revision 0 : 10. September. 2008



- Electrical Characteristics
  - Package Dimensions
  - Testing Environment
  - Frequency Characteristics
- 

**SAWNICS Inc.**

---

460 Cheonheung-ri, Seonggeo-eup, Cheonan-si, Chungcheongnam-do, 330-836 / Korea.  
Tel: +82 41 550 9372 / Fax: +82 41 550 9399 / [www.sawnics.com](http://www.sawnics.com)

## □ Electrical Characteristics

### Maximum Ratings

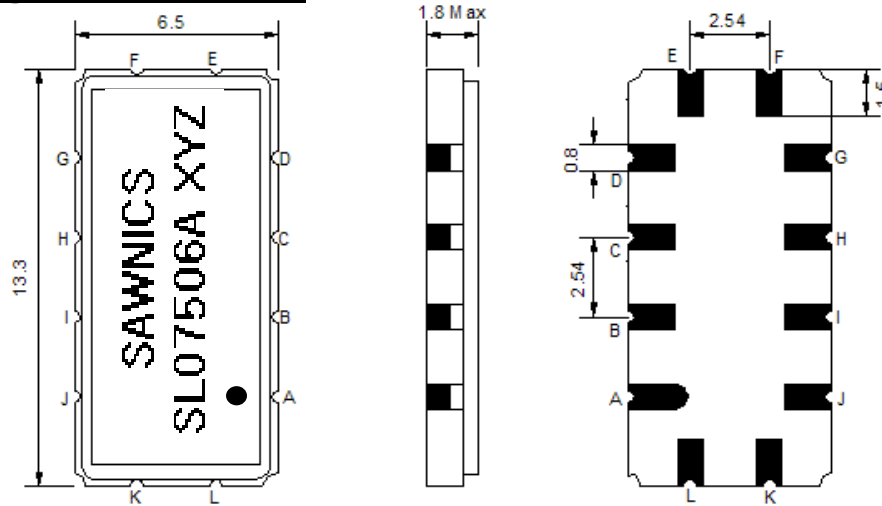
Parameters Description	Unit	Minimum	Typical	Maximum
Operating Temperature Range	°C	-30	-	85
Storage Temperature Range	°C	-40	-	85
Maximum DC Voltage	V	-	-	10
Maximum Input Power	dBm	-	-	30
Source Impedance (single ended) <sup>(1)</sup>	Ω	-	50	-
Load Impedance (single ended) <sup>(1)</sup>	Ω	-	50	-
Package type & size	V			
Length x Width	mm <sup>2</sup>	-	13.3 x 6.5	-
Height	mm	-	-	1.8

### Electrical Specification

Parameters Description	Unit	Minimum	Typical	Maximum
Center Frequency (Fo)	MHz	-	75.0	-
Insertion Loss at Fo	dB	-	13.3	15.0
Temperature Coefficient	ppm/°C	-	-18	-
Amplitude Ripple within fo ±2.7 MHz	dB <sub>p-p</sub>	-	0.3	0.5
Group Delay Variation within fo ±2.7 MHz	nsec	-	39	80
Absolute Delay at Fo	µsec	-	1.21	-
Bandwidth at -1.0 dB	MHz	-	6.31	-
Bandwidth at -3.0 dB	MHz	-	6.92	-
Bandwidth at -40.0 dB	MHz	-	9.40	9.0
Input VSWR at Fo	dB	-	2.0	-
Output VSWR at Fo	dB	-	2.4	-
<b>Relative Attenuation:</b>				
Lower Sidelobe	dB	40	45	-
Upper Sidelobe	dB	40	45	-

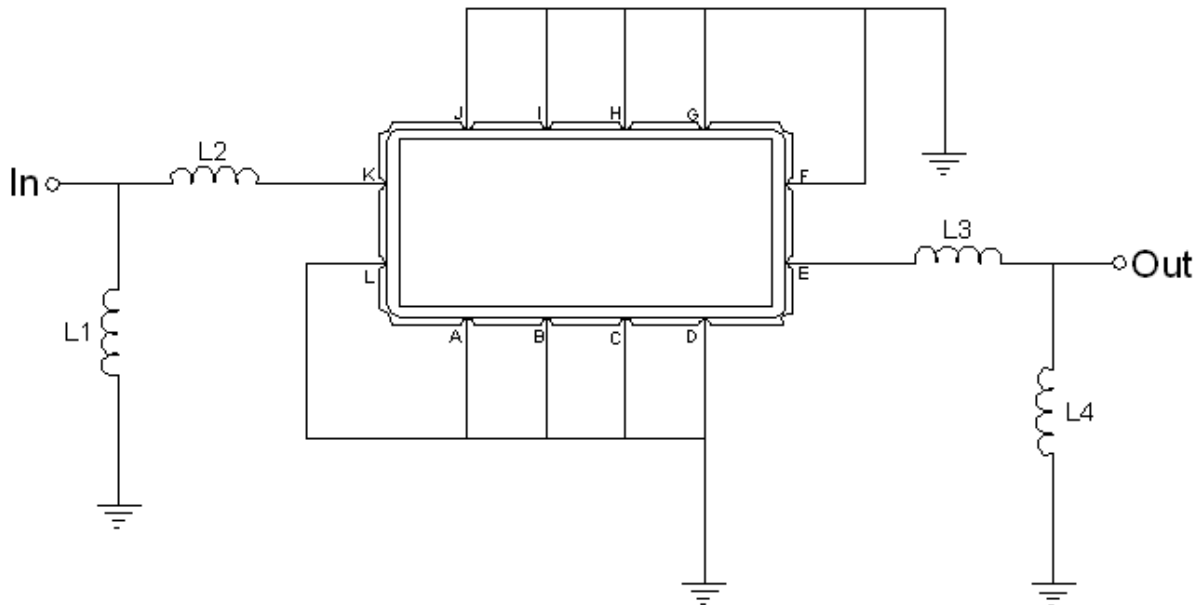
**Notes :** (1) With Matching Network (Ref. Testing Environment Circuit as shown below).  
Those impedances could be modified with different impedance values and/or structures, if necessary.

**Package Dimensions**



Pin Description	
A, B, C, D, F, G, H, I, J, L	Ground
K	Input
E	Output

**Testing Environment**



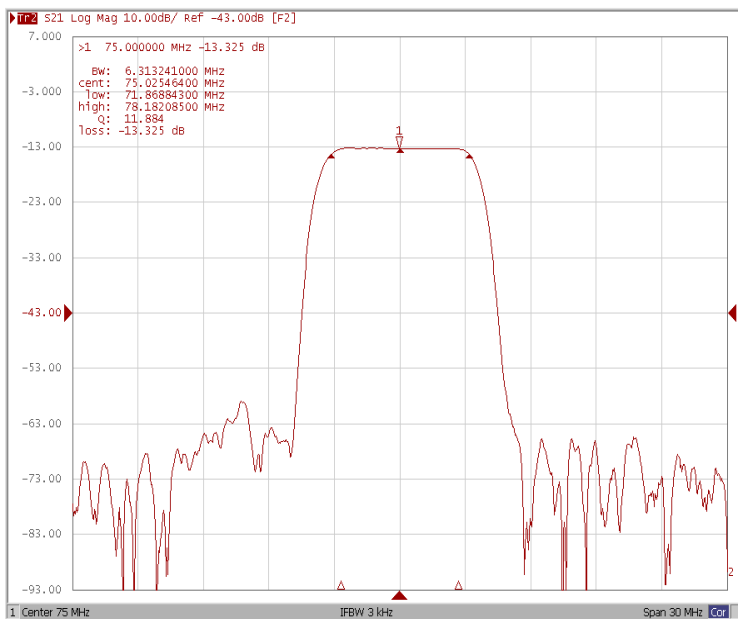
Test Fixture & Values	
Input	L1=33nH , L2=12nH
Output	L3=8.2nH , L3=47nH
Source/Load Impedance	50 Ω



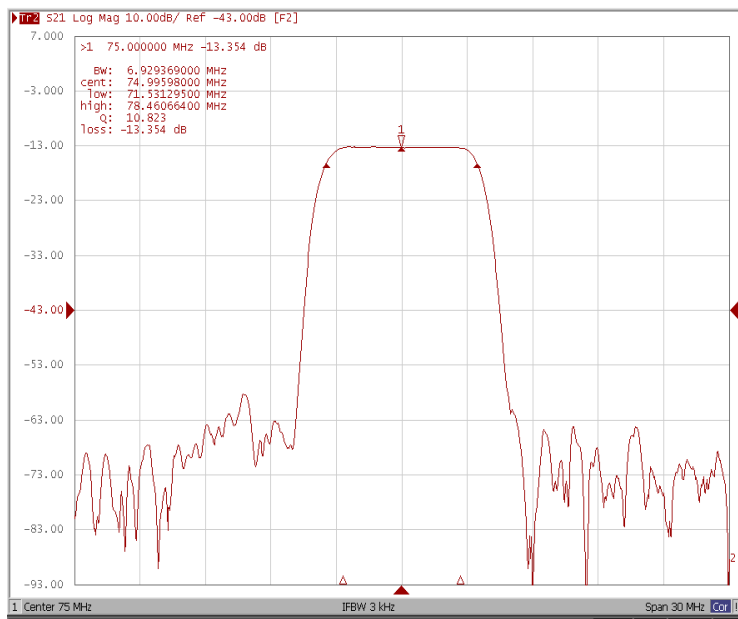
## Frequency Characteristics

### Frequency Response

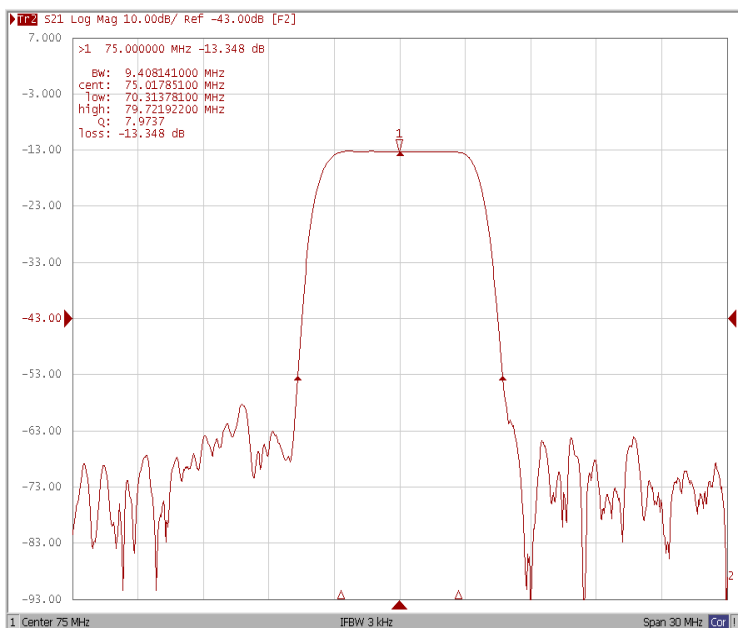
Bandwidth at -1.0 dB



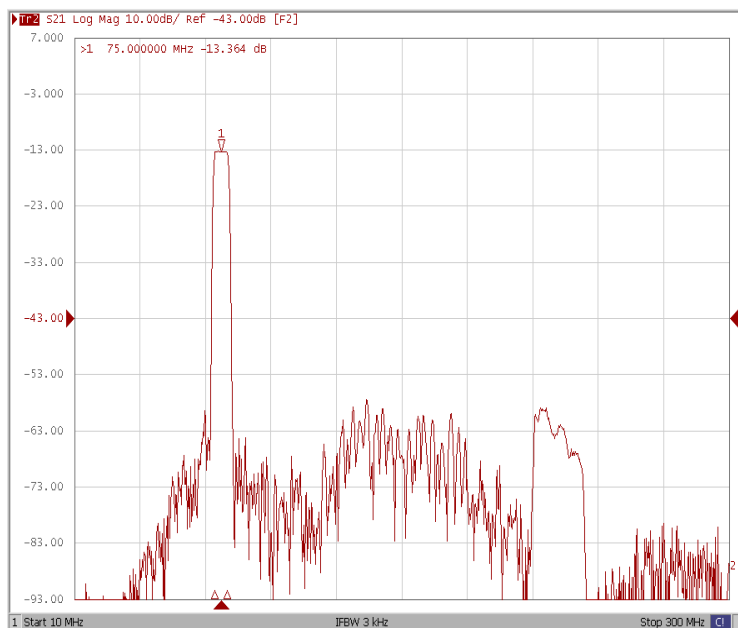
Bandwidth at -3.0 dB



Bandwidth at -40.0 dB



Wide-Band

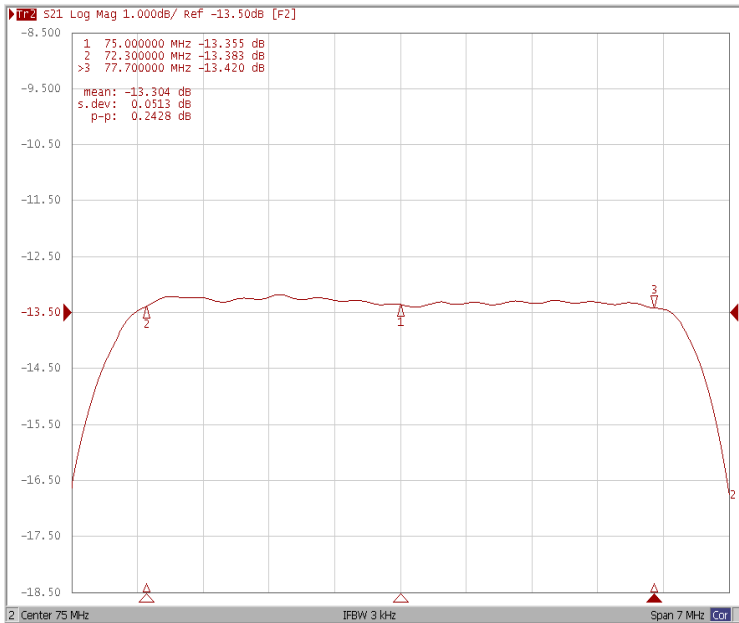




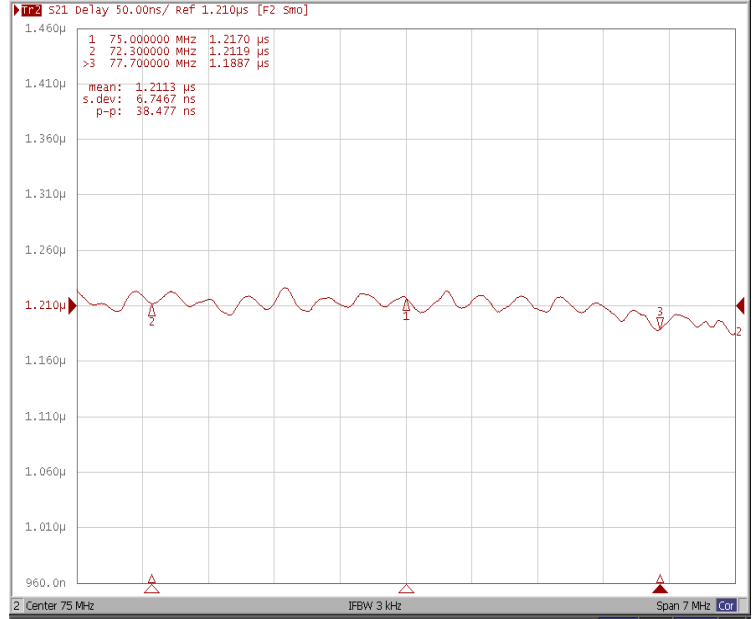
### Frequency Characteristics

#### Frequency Response

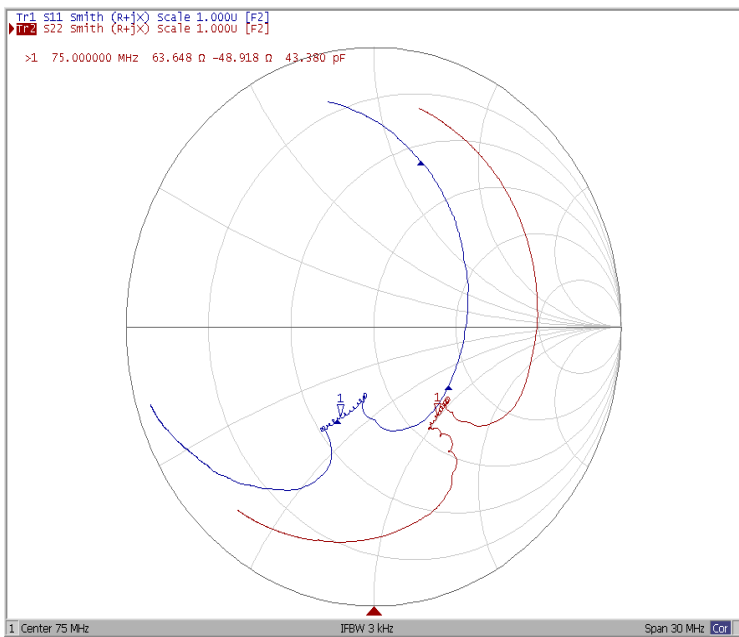
#### Ripple Variation Fo±2.7MHz



#### Group Delay Variation Fo±2.7MHz



#### Smith Chart



#### SWR

